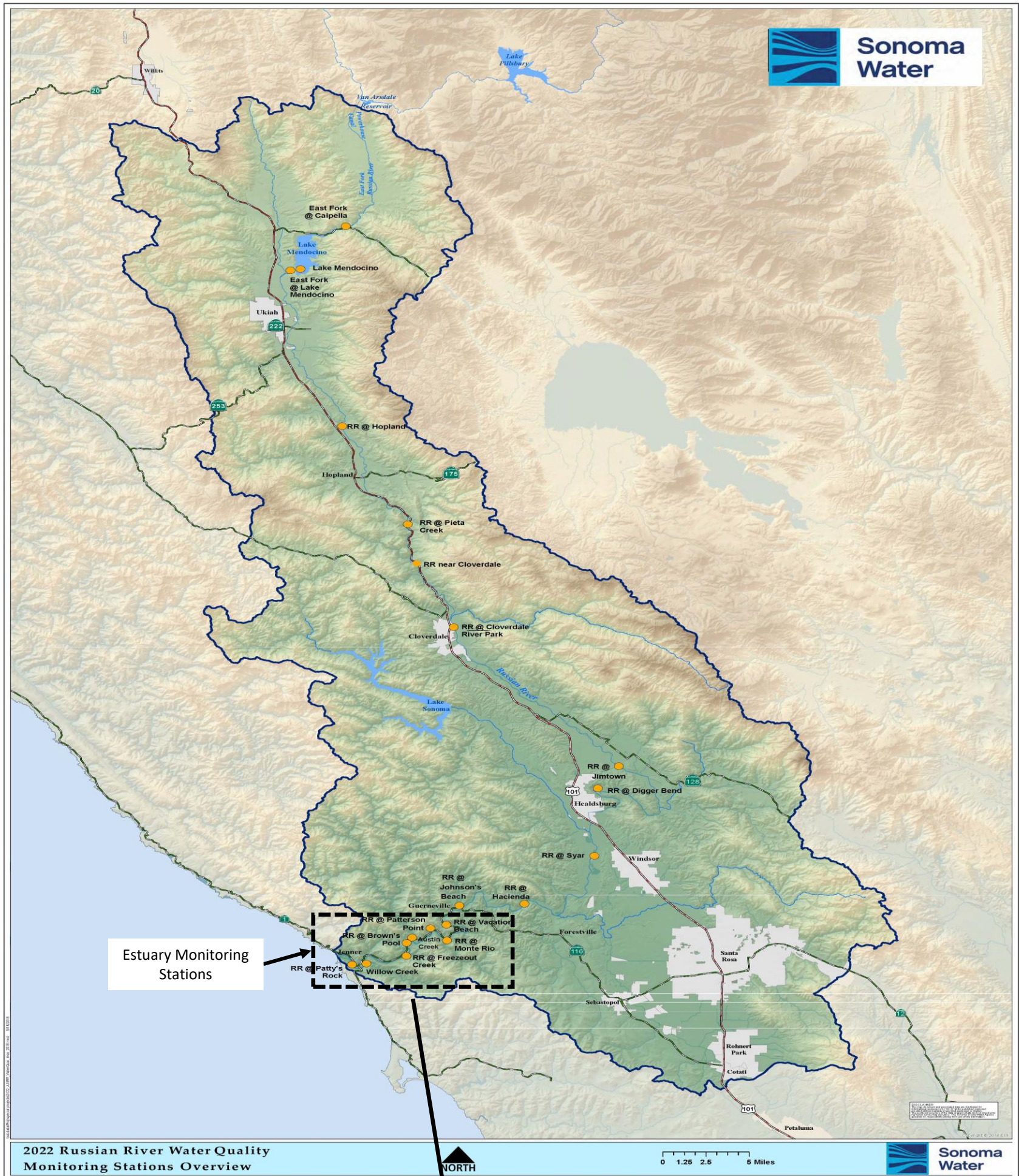


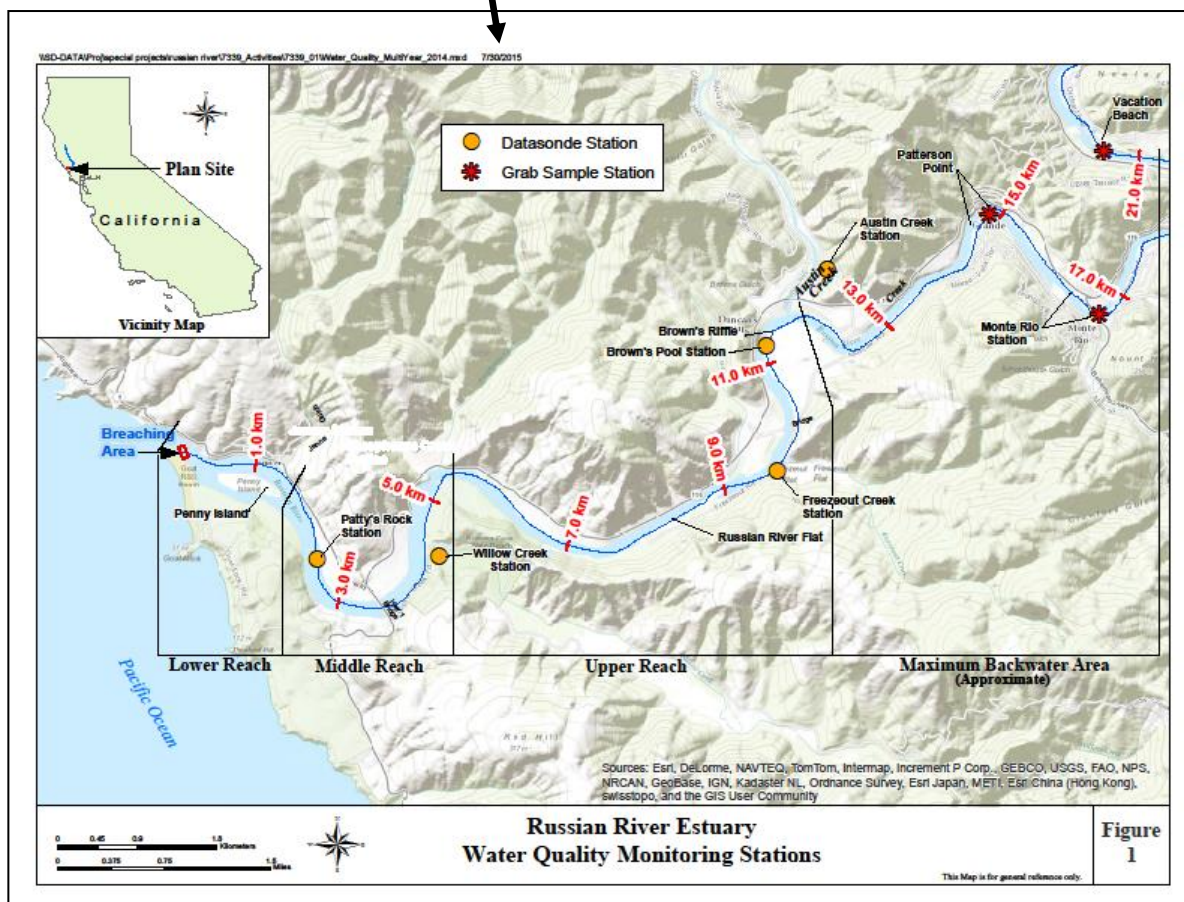


Sonoma Water

State Water Resources Control Board Temporary Urgency Change Order (5/19/2023) Russian River Water Quality Report August 18 – August 24, 2023



2022 Russian River Water Quality Monitoring Stations Overview



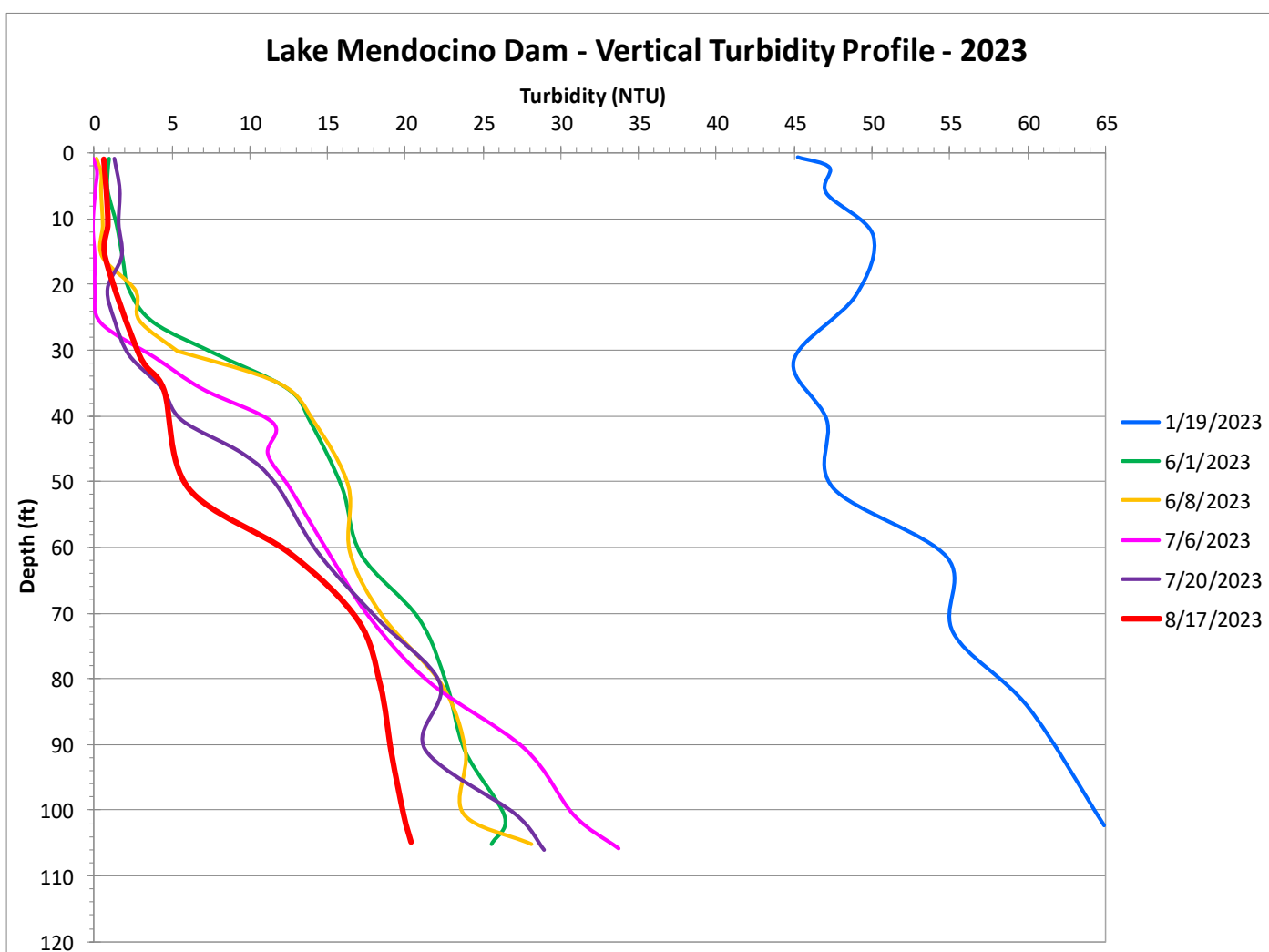
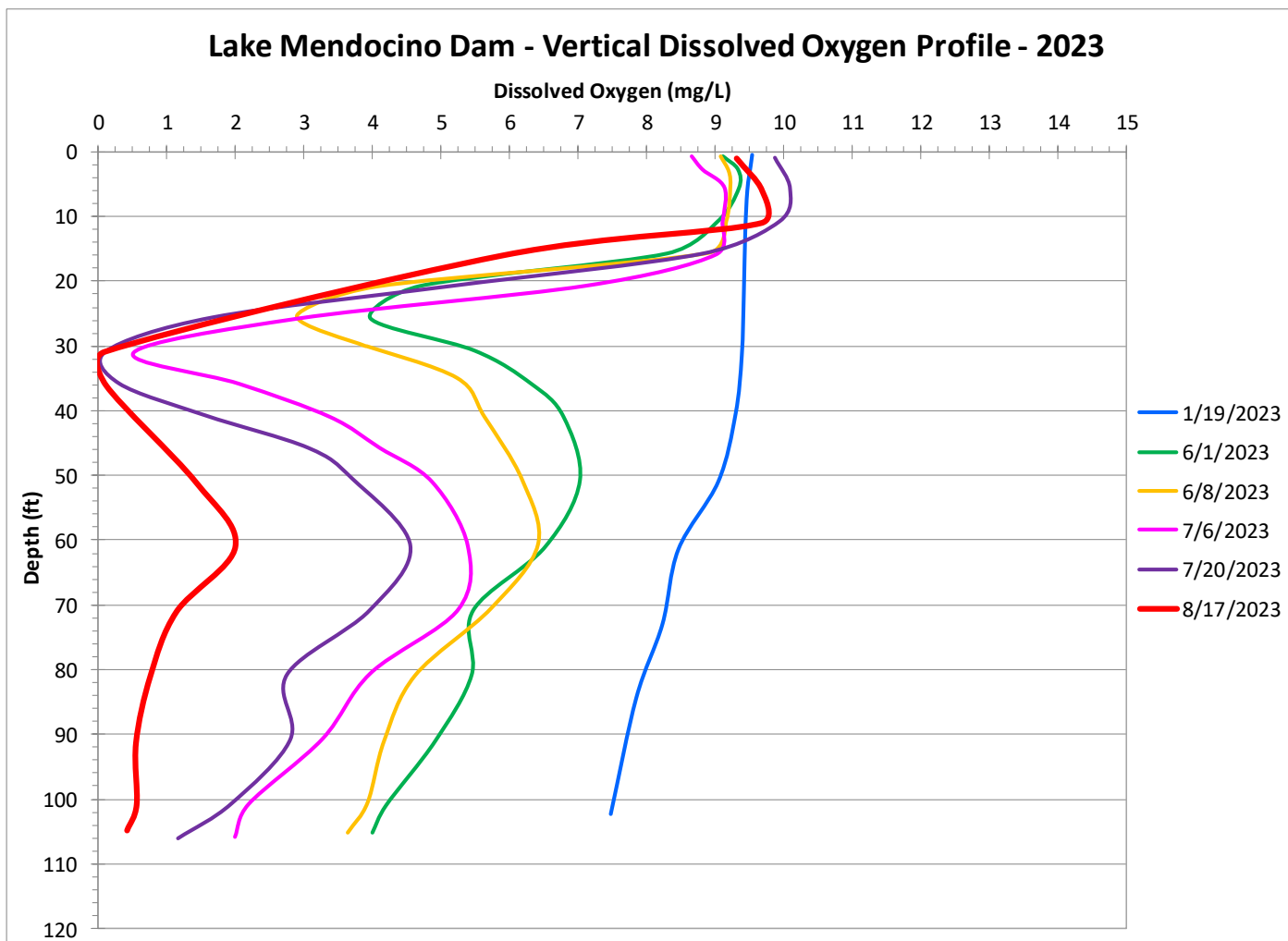
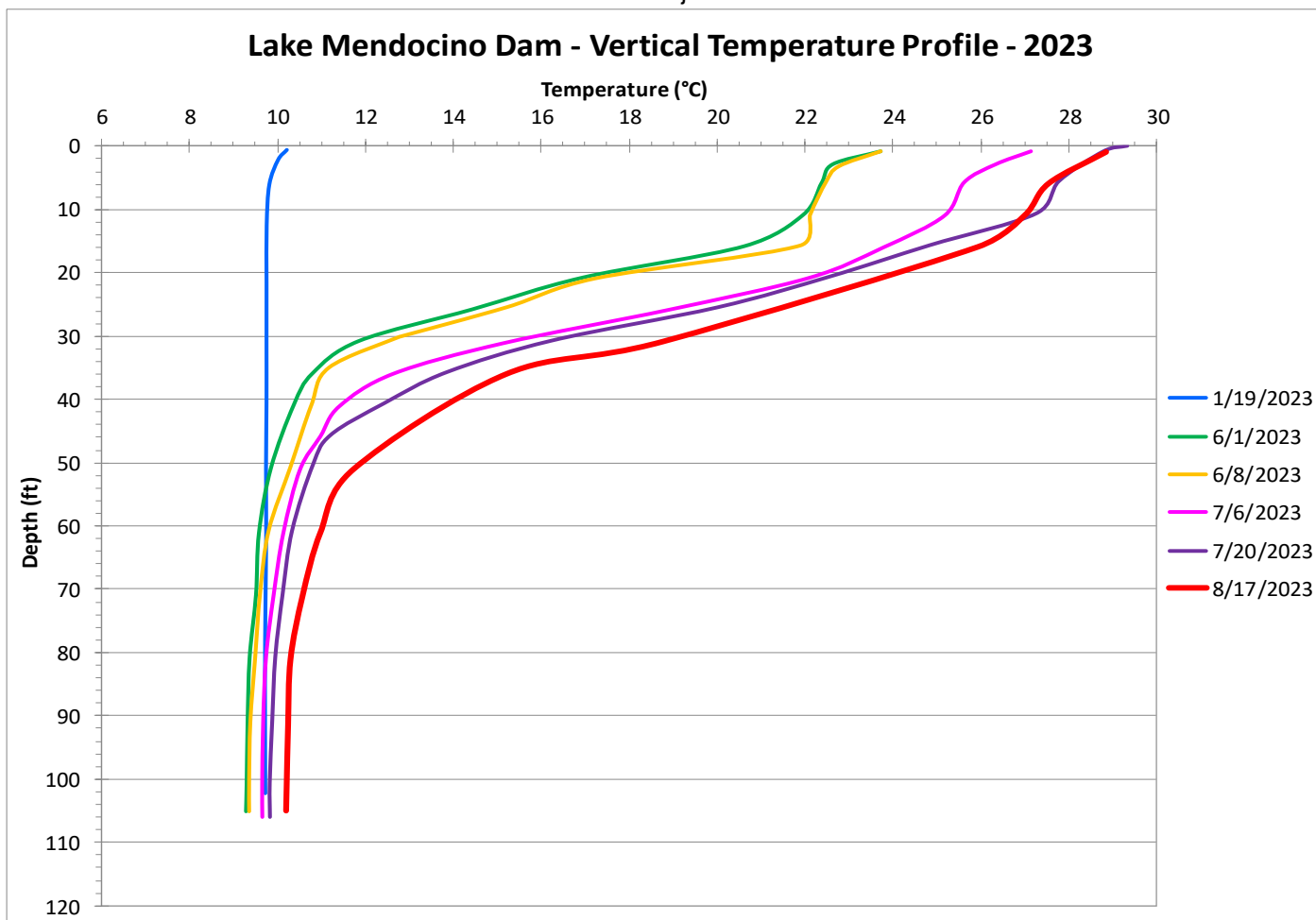
Russian River Estuary Water Quality Monitoring Stations

Figure 1

This Map is for general reference only.

Lake Mendocino Water Quality Vertical Profiles (January 19 – August 17, 2023)

Provisional Data Subject to Revision

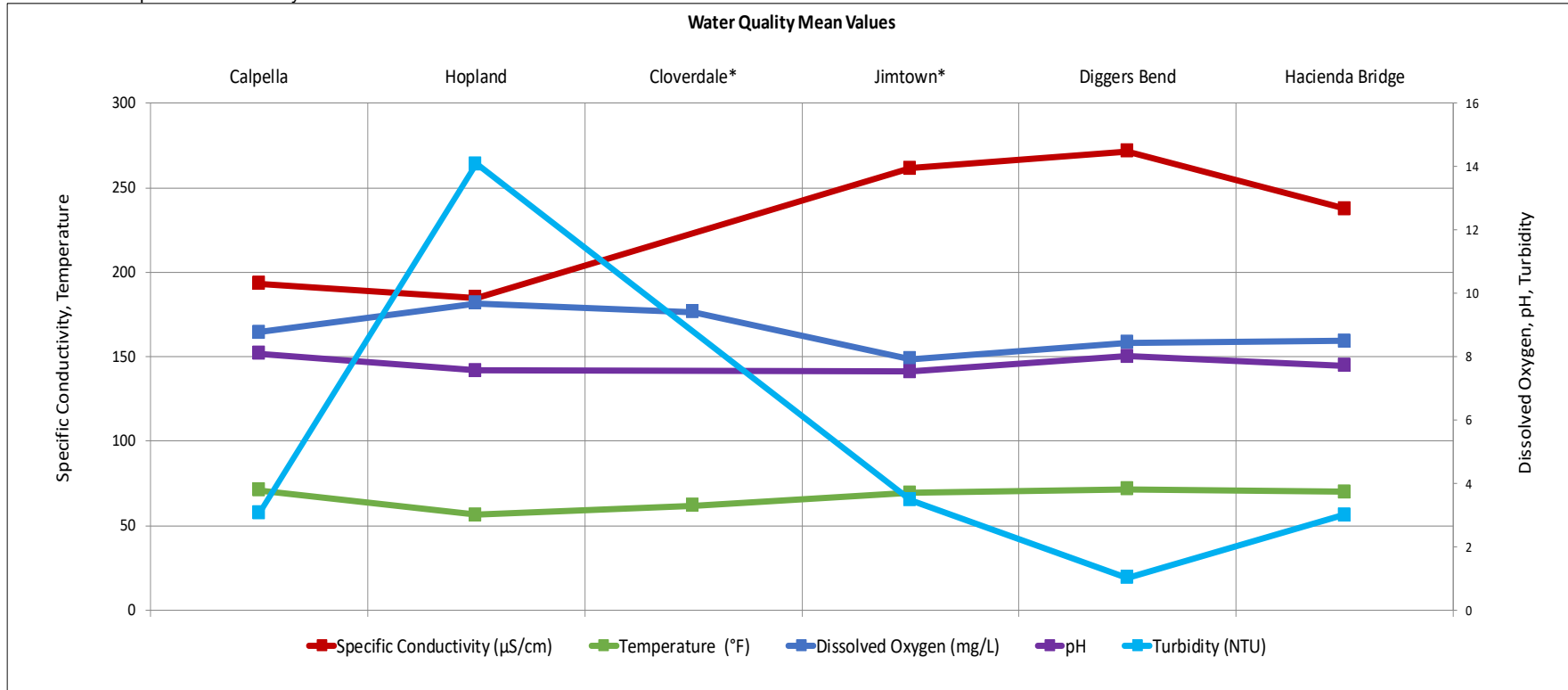


Russian River Water Quality Sondes (August 17 – August 24, 2023)

Provisional Data Subject to Revision

Parameter		Calpella	Hopland	Cloverdale*	Jimtown*	Diggers Bend	River Diversion System at Mirabel*	Hacienda Bridge	Johnsons Beach*
		USGS 11461500	USGS 11462500	USGS 11463000	USGS 11463682	USGS 11463980	SCWA	USGS 11467000	SCWA
Temperature (°F)	Min	67.5	53.8	57.7	65.5	68.0		66.7	
	Max	74.8	59.0	66.4	73.6	75.7		73.4	
	Mean	71.1	56.5	61.7	69.2	71.6		69.9	
Specific Conductivity (µS/cm)	Min	191.0	183.0		256.0	266.0		235.0	
	Max	197.0	186.0		267.0	275.0		240.0	
	Mean	193.4	185.0		261.5	271.5		237.6	
Dissolved Oxygen (mg/L)	Min	8.2	9.1	8.4	6.6	6.9		7.2	
	Max	9.6	10.4	10.7	10.0	10.8		9.8	
	Mean	8.8	9.7	9.4	7.9	8.4		8.5	
Dissolved Oxygen (% Saturation)	Min	95.2	88.1	87.0	73.3	77.7		81.0	
	Max	108.0	102.7	112.4	115.2	128.8		114.2	
	Mean	99.7	93.1	96.3	88.5	96.7		95.5	
pH	Min	8.0	7.5		7.4	7.6		7.5	
	Max	8.3	7.8		7.8	8.6		8.0	
	Mean	8.1	7.6		7.5	8.0		7.7	
Turbidity (NTU)	Min	1.6	12.8		2.7	0.7		2.3	
	Max	5.7	15.7		4.5	1.7		4.2	
	Mean	3.0	14.1		3.5	1.0		3.0	

*Station operated seasonally

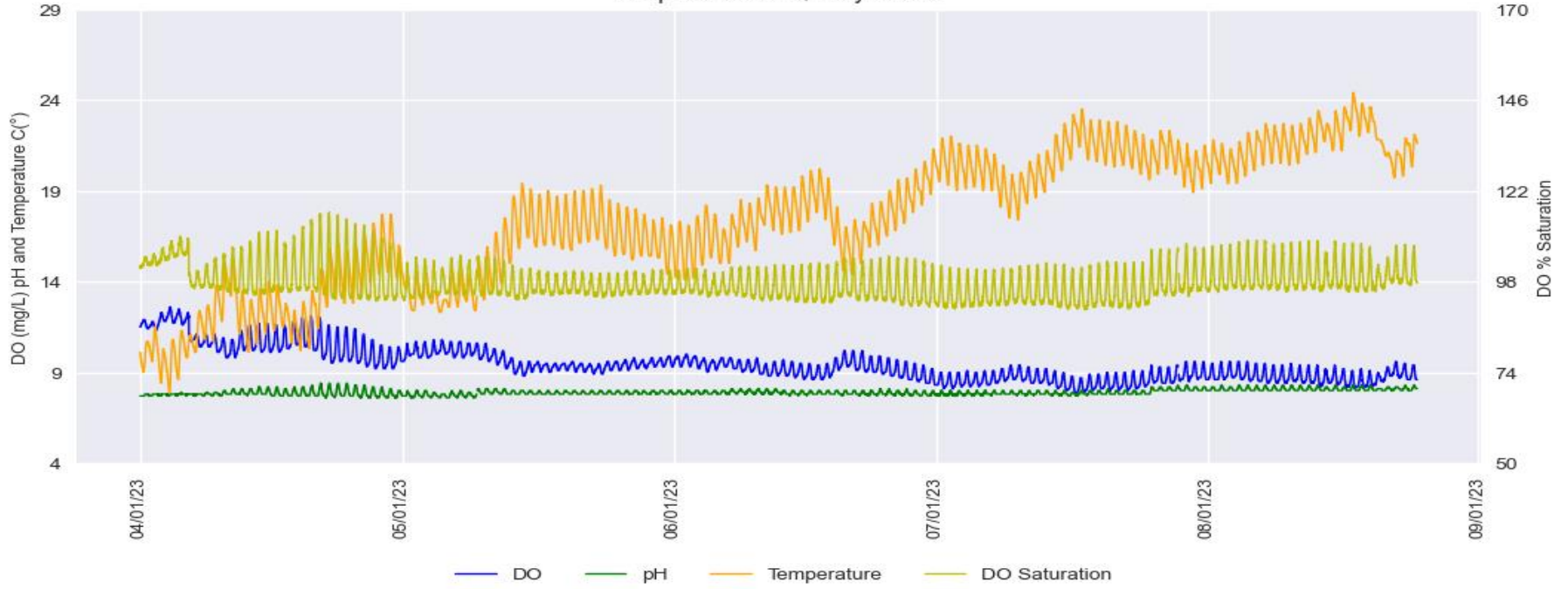


Russian River Water Quality April 1 – August 25, 2023

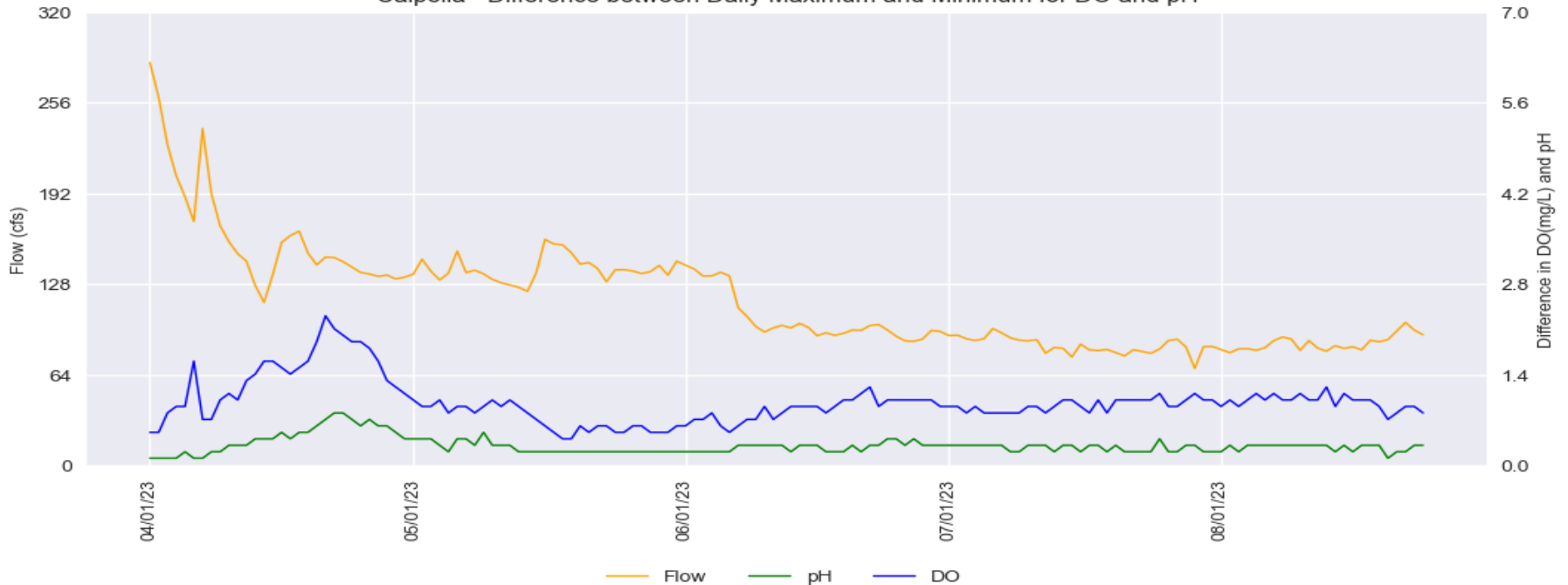
Provisional Data Subject to Revision

Calpella (East Fork Russian River)

Calpella Water Quality Trend



Calpella - Difference between Daily Maximum and Minimum for DO and pH

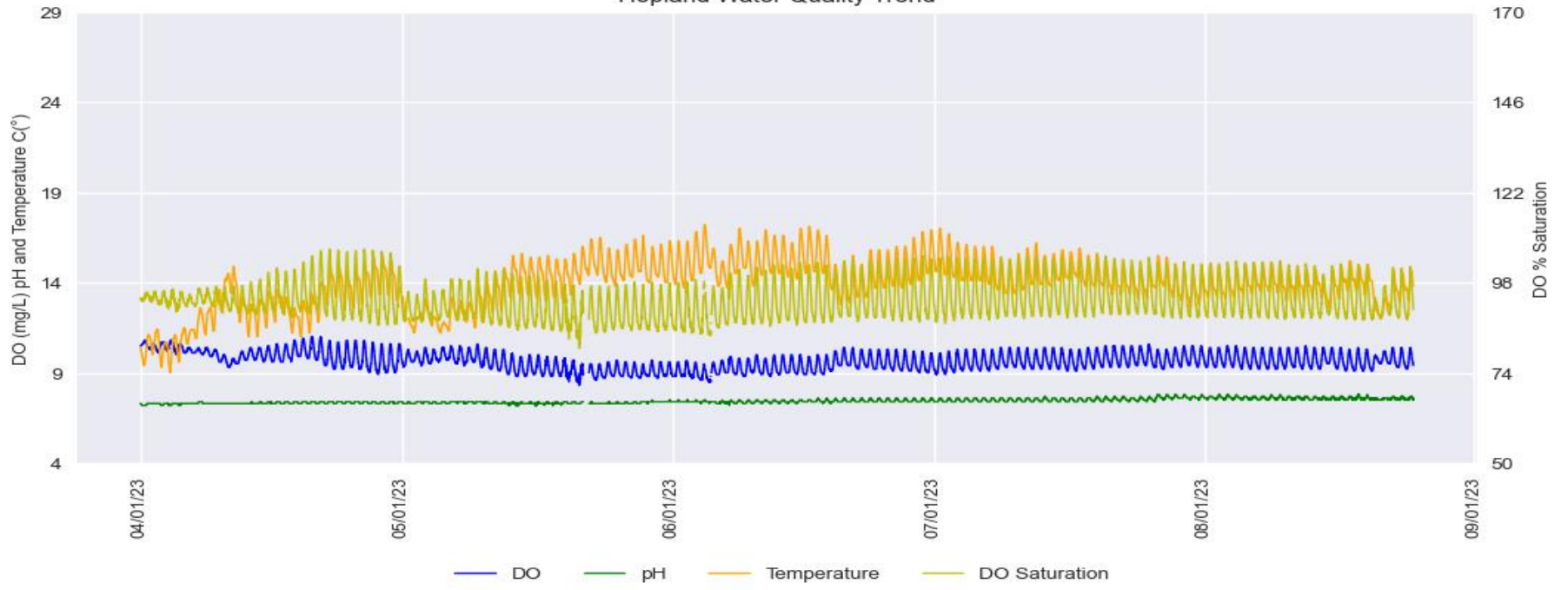


Russian River Water Quality April 1 – August 25, 2023

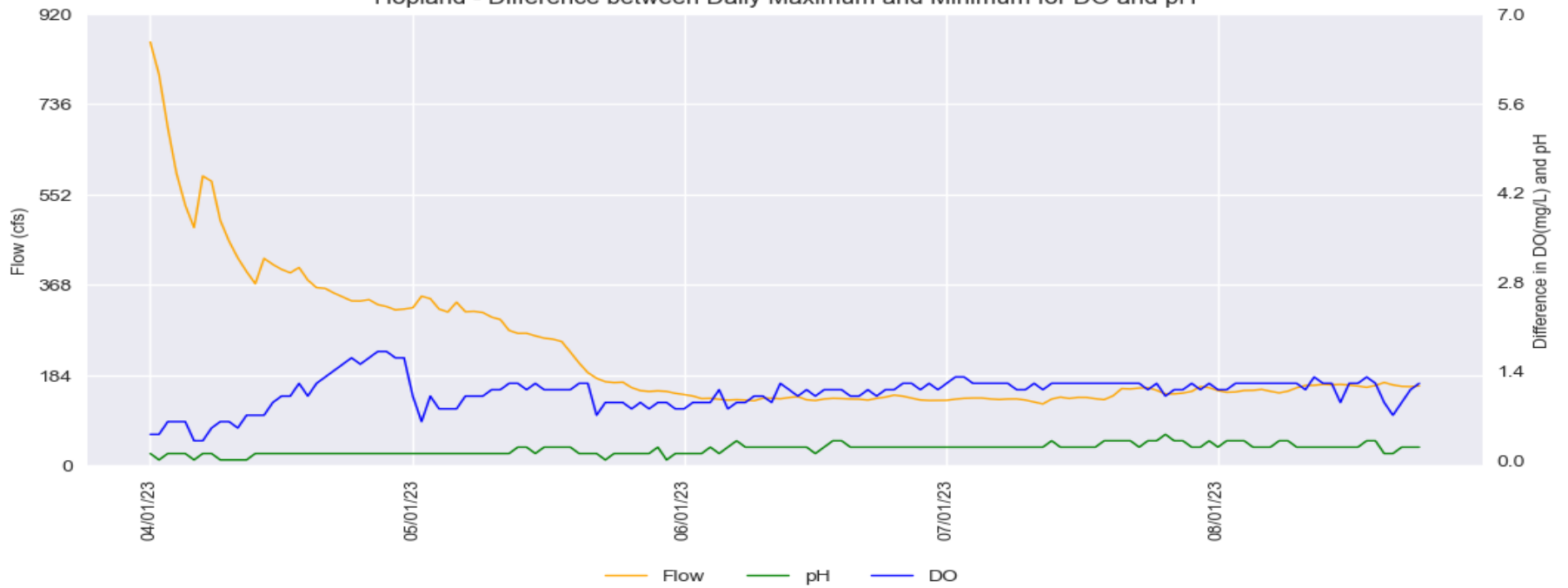
Provisional Data Subject to Revision

Hopland

Hopland Water Quality Trend

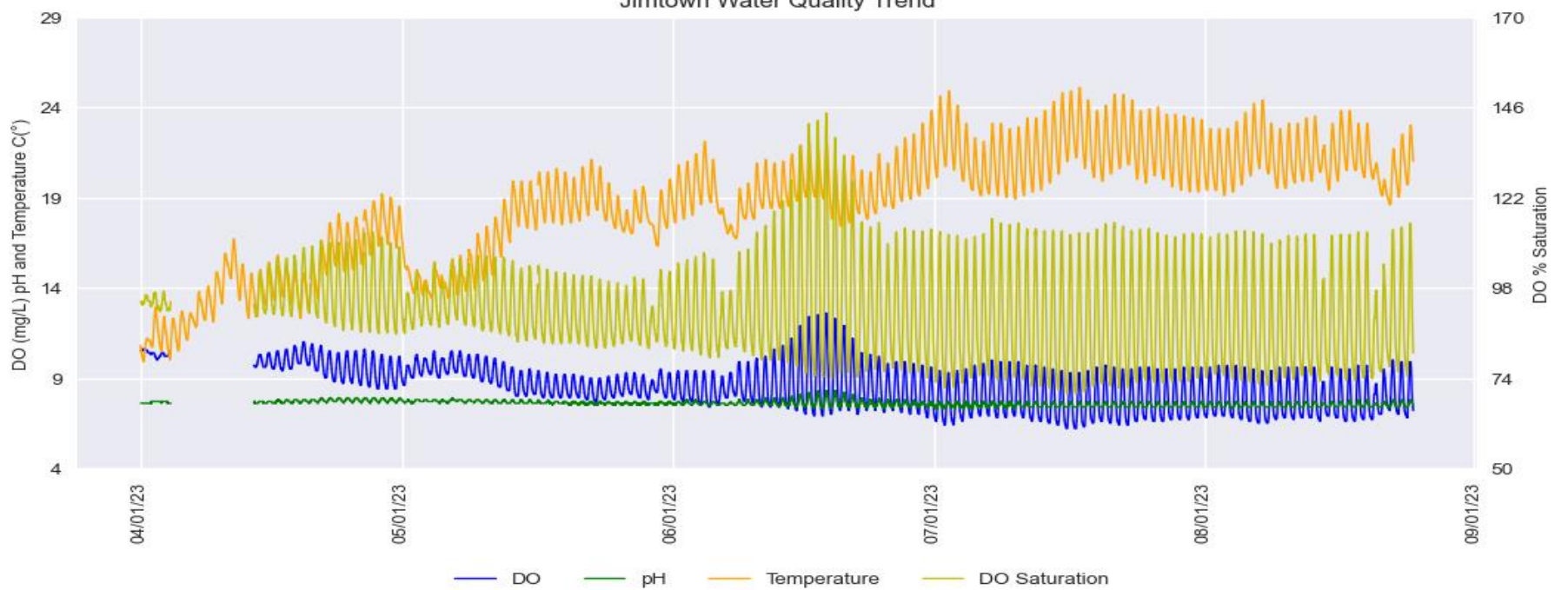


Hopland - Difference between Daily Maximum and Minimum for DO and pH

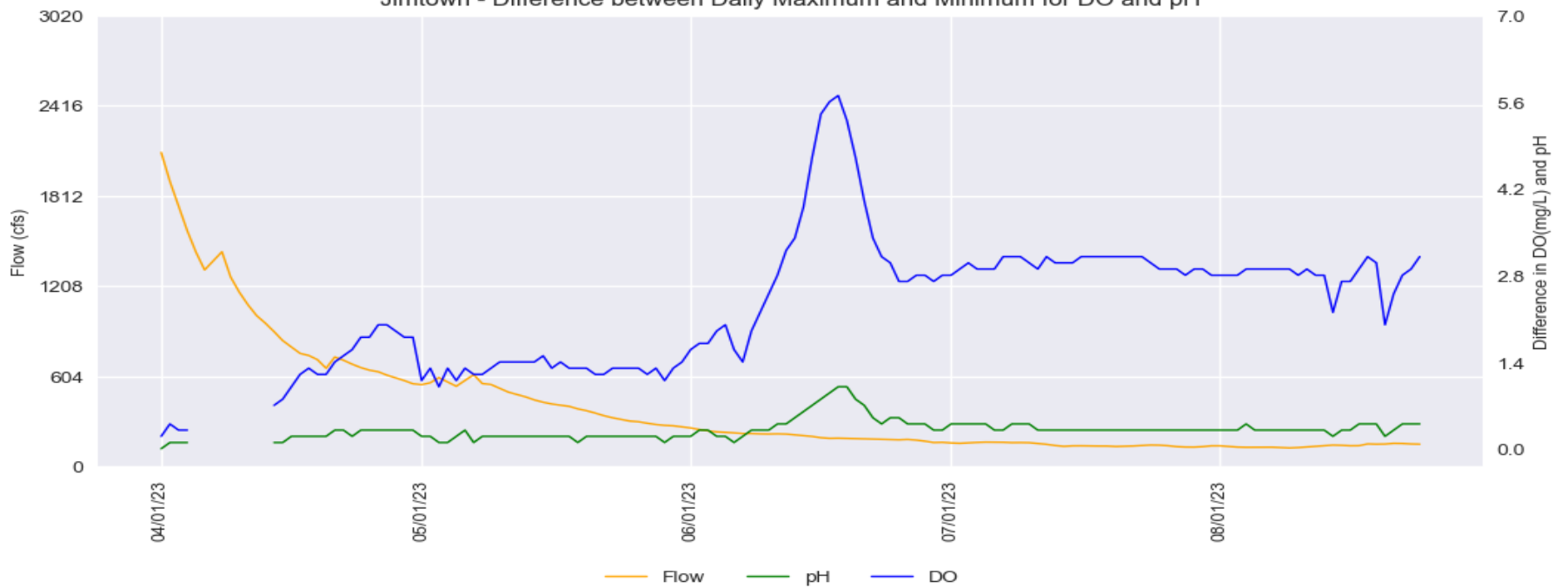


Jimtown

Jimtown Water Quality Trend



Jimtown - Difference between Daily Maximum and Minimum for DO and pH

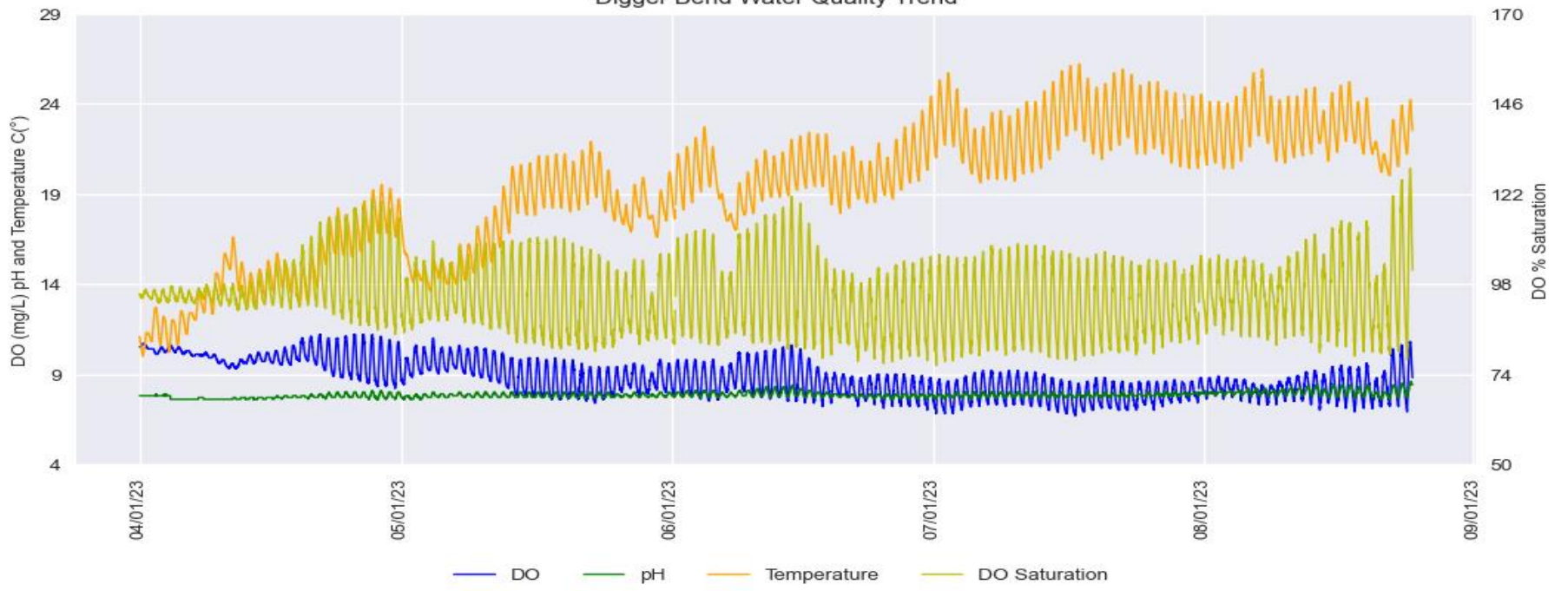


Russian River Water Quality April 1 – August 25, 2023

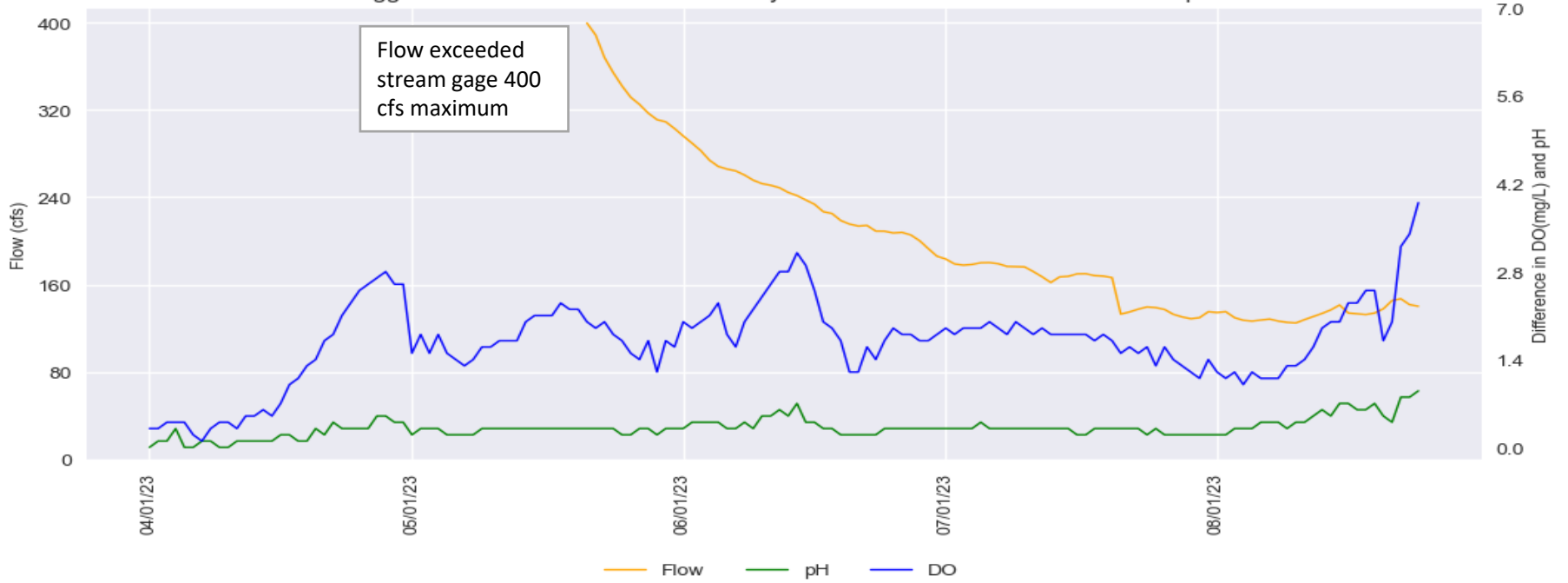
Provisional Data Subject to Revision

Diggers Bend

Digger Bend Water Quality Trend

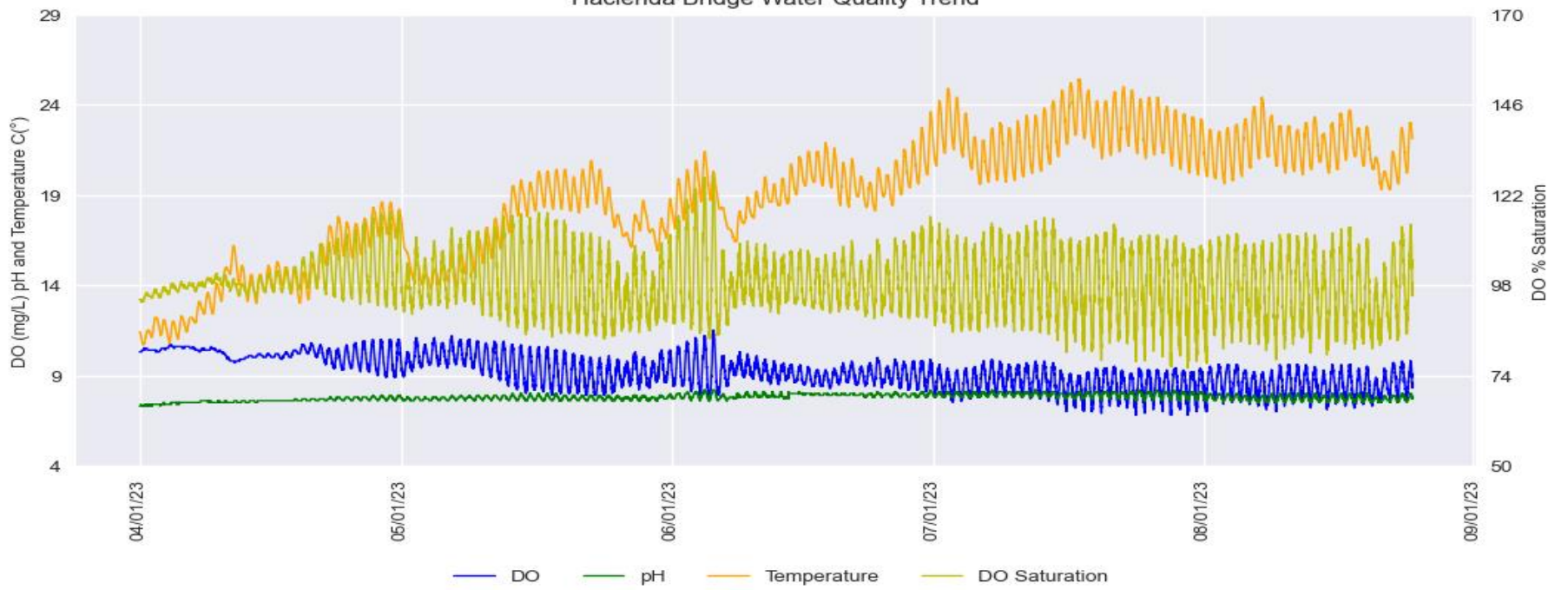


Digger Bend - Difference between Daily Maximum and Minimum for DO and pH



Hacienda Bridge

Hacienda Bridge Water Quality Trend



Hacienda Bridge - Difference between Daily Maximum and Minimum for DO and pH

